

Frequently Asked Questions

FAQs from the local community on Sienna Solar Center

Q Where is Sienna solar center located?

A Sienna Solar Center is located north of the Lucerne Valley community, mostly on former agricultural land (shown in green). The southernmost point of the project is 1.5 miles north of Rabbit Springs Road, and the westernmost point is one mile east of Highway 247 – beyond the distance where the project would be significantly visible from either road.

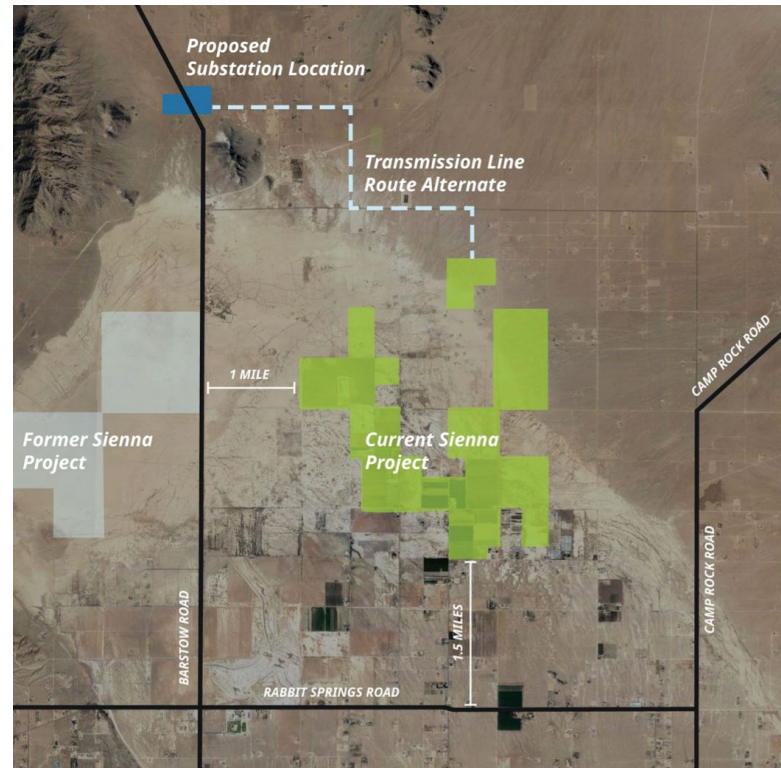
The project was moved from its original location (shown in gray) in response to the local community's desire to keep the project out of sight and minimize impacts to residents.

Q Will there be an increase in dust caused by these solar panels?

A Sienna Solar Center will take several steps to mitigate any impacts to air quality during construction including regularly wetting down dry and dusty areas. After construction, it is in our best interests to reduce dust and keep panels clean, thereby producing the greatest amount of solar energy possible. Furthermore, research has demonstrated that solar panels actually decrease dust downwind of a project in the years following construction.¹

Q Will there be security at Sienna Solar Center?

A The Sienna Solar Center site will have 24/7 security to ensure a safe site. Increased security could also result in reduced illegal trash dumping, vandalism, and other illegal activity nearby.



Q Will the project impact local water supplies?

A No. Solar panels use minimal water, particularly relative to agriculture other energy production sources.² The biggest use of water occurs during construction to suppress any dust. After construction, water will be primarily used to remove dirt and dust from the solar panels, if necessary.

The bulk of Sienna Solar Project is located on land formerly used for agriculture, which is much more water-intensive than solar energy production. For agricultural land facing drought and limited or shrinking water supplies, solar is often a more water efficient and economically feasible alternative for landowners who have fallowed or are considering fallowing their land.

FAQs from the local community on Sienna Solar Center

Sienna SOLAR CENTER

Q Will any jobs be created by Sienna Solar Center?

A Overall, Sienna Solar Center is estimated to create up to 500 well-paying construction jobs over 12 to 24 months, plus 15 permanent jobs for operations positions in Lucerne Valley. In addition, the project is expected to generate millions in local tax revenue that would go towards an array of services like schools, public safety, and street services. Meanwhile, indirect benefits from construction would likely spread to local restaurants, markets, and more.

Q Do solar facilities decrease property values?

A A wide body of existing research has demonstrated no significant impact on property values for residences located nearby solar facilities. Most assessors believe that large solar facilities would have minimal impact on property values. For residences both nearby and adjacent to solar projects across California, there has been no observed significant impact on property values.

Q How will Sienna Solar Center impact local plants and wildlife?

A Like all Avantus projects, Sienna Solar Center is designed to avoid or minimize potential impacts to local wildlife. Additionally, Sienna Solar Center is largely located on previously agricultural land and will therefore have minimal impact on native plants. Our past projects have garnered support from respected groups including the Sierra Club, Audubon California, Defenders of Wildlife, and the Natural Resources Defense Council.

Q Where will the generated power go?

A Once operational, the generated power will be connected to Southern California Edison's (SCE) proposed Calcite Substation, providing clean energy to the regional electricity grid and helping advance grid stability and energy independence for California.



¹ <https://www.tandfonline.com/doi/full/10.1080/10962247.2017.1343210>

² <https://onlinelibrary.wiley.com/doi/full/10.1111/j.1936-704X.2013.03156.x>